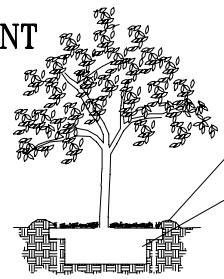
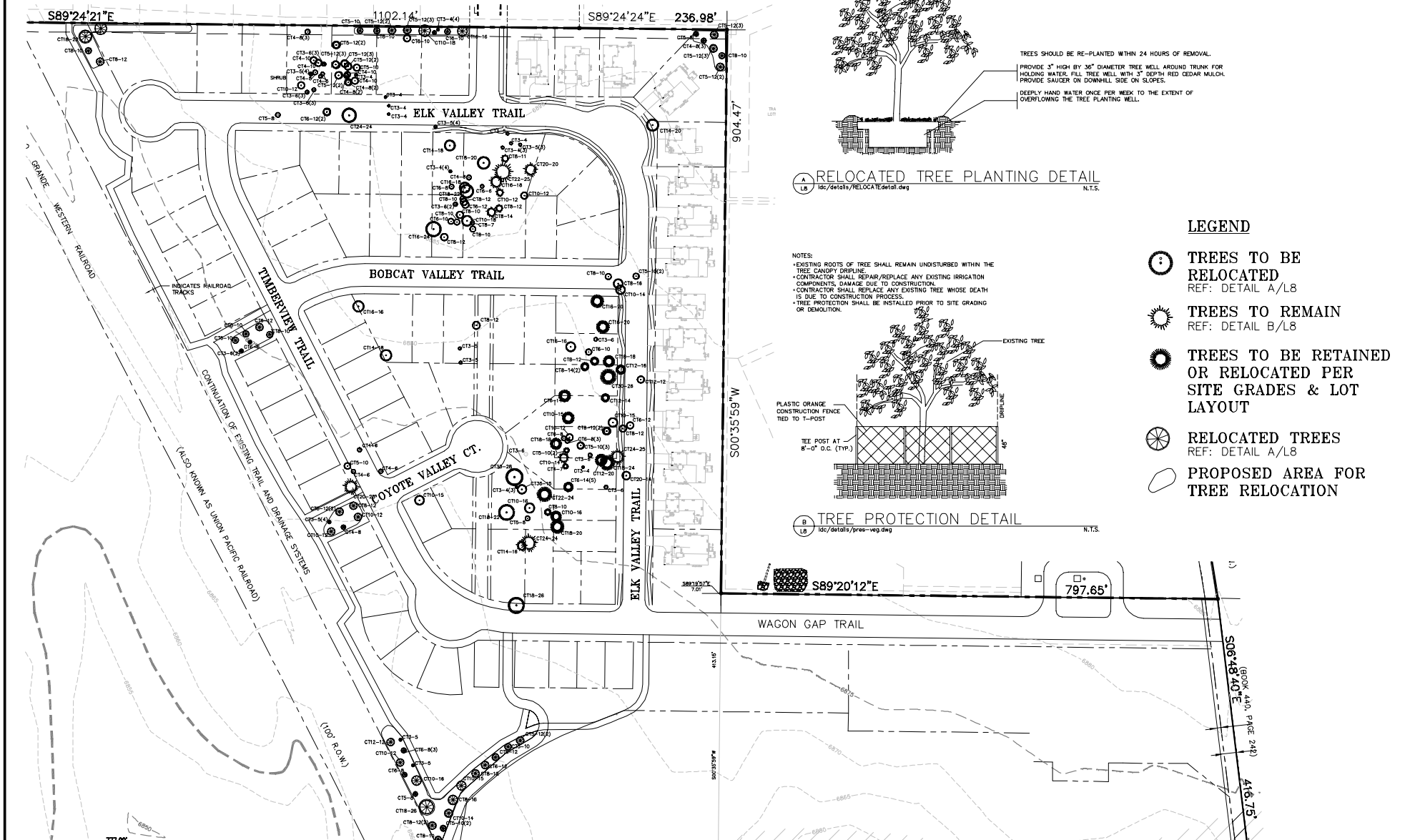


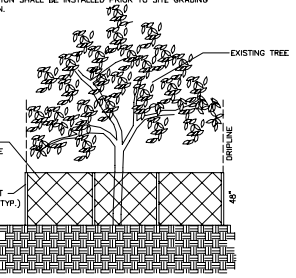
TRAILS END - MONUMENT



TREES SHOULD BE RE-PLANTED WITHIN 24 HOURS OF REMOVAL.
 PROVIDE 3" HIGH BY 30" DIAMETER TREE WELL AROUND TRUNK FOR HOLDING WATER. FILL TREE WELL WITH 3" DEPTH RED CEDAR MULCH. PROVIDE SAUCER ON DOWNHILL SIDE ON SLOPES.
 DEEPLY HAND WATER ONCE PER WEEK TO THE EXTENT OF OVERFLOWING THE TREE PLANTING WELL.

RELOCATED TREE PLANTING DETAIL
 L8 ldc/details/RELOCATEDetail.dwg N.T.S.

NOTES:
 *EXISTING ROOTS OF TREE SHALL REMAIN UNDISTURBED WITHIN THE TREE CANOPY DRILLING.
 *CONTRACTOR SHALL REPAIR/REPLACE ANY EXISTING IRRIGATION COMPONENTS DAMAGE DUE TO CONSTRUCTION.
 *CONTRACTOR SHALL REPLACE ANY EXISTING TREE WHOSE DEATH IS DUE TO CONSTRUCTION PROCESS.
 *TREE PROTECTION SHALL BE INSTALLED PRIOR TO SITE GRADING OR DEMOLITION.



TREE PROTECTION DETAIL
 L8 ldc/details/tree-veg.dwg N.T.S.

LEGEND

- TREES TO BE RELOCATED
REF: DETAIL A/L8
- TREES TO REMAIN
REF: DETAIL B/L8
- TREES TO BE RETAINED OR RELOCATED PER SITE GRADES & LOT LAYOUT
- RELOCATED TREES
REF: DETAIL A/L8
- PROPOSED AREA FOR TREE RELOCATION

TREE RELOCATION

LDC, Inc.			
PLANNING, SURVEYING, LANDSCAPE ARCHITECTURE			
3520 Austin Bluffs Parkway Colorado Springs, CO 80918 (719) 528-6133 FAX (719) 528-6848			
NO.	REVISIONS DESCRIPTION	BY	DATE

TRAILS END - MONUMENT TREE RELOCATION		
PROJECT NO. 03079	Drawn By: JCH Checked By: JFB	Date: 8/2/04 Sheet: 17 of 8

F:\03079\03079-1\msh.dwg - Monument\03079-Landscape\TREE RELOCATION\03079TREE.dwg, Layout, 9/13/2004 10:02:07 AM