

TOTAL LAND SUMMARY:

SDA - A : 50.3 HA/ 124.8 AC
 SDA - B : 8.7 HA/ 21.6 AC
 SDA - C : 6.1 HA/ 14.8 AC
 SDA - D : 9.7 HA/ 24.1 AC
 SDA - E : 8.6 HA/ 21.3 AC
 SDA - F : 8.7 HA/ 21.6 AC
 SDA - G : 3.6 HA/ 9.0 AC
 TOTAL: 50.3 HA/ 124.8 AC

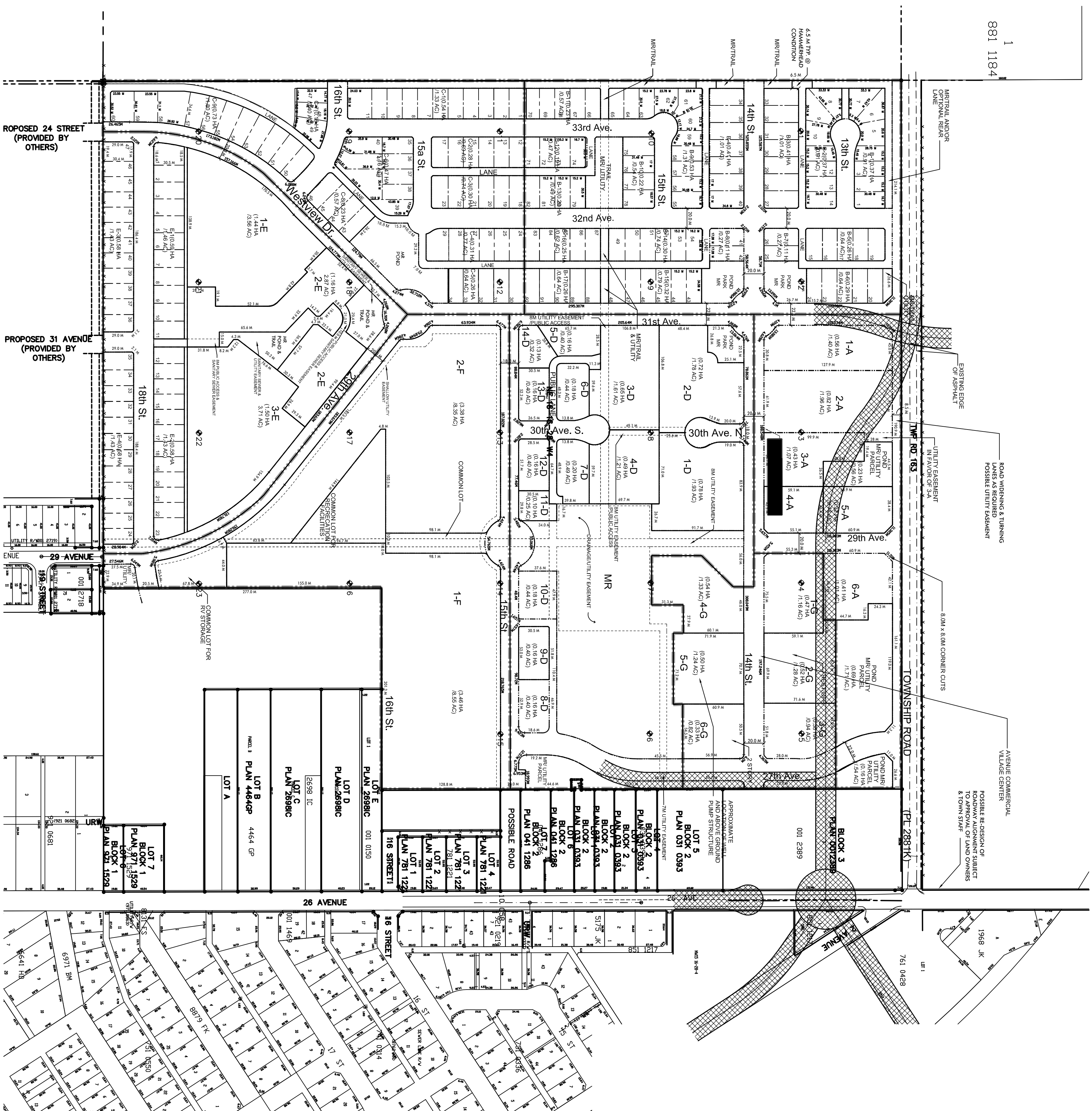
MR/UTILITY* SUMMARY:

SDA - A : 1.03 HA/ 2.55 AC
 SDA - B : 0.99 HA/ 2.45 AC
 SDA - C : 0.82 HA/ 2.03 AC
 SDA - D : 3.56 HA/ 8.8 AC
 SDA - E : 0.56 HA/ 1.38 AC
 SDA - F : 0.77 HA/ 0.19 AC
 SDA - G : 0.105 HA/ 0.26 AC
 TOTAL: 7.15 HA/ 17.66 AC

1.415% AREA COVERAGE
 * INCLUDES UTILITIES, PARKS, PONDS,
 TRAILS & WATER MANAGEMENT

ROADWAY DEDICATION SUMMARY:
 TOWNSHIP ROAD (PL 2881K) DEDICATION**
 8.5 M X 704.8 M = 6 HA/ 1.48 AC
 = 48 % AREA OF SITE

**ROAD WIDENING, TURNING LANES,
 SIDEWALKS AND PROJECT BEAUTIFICATION

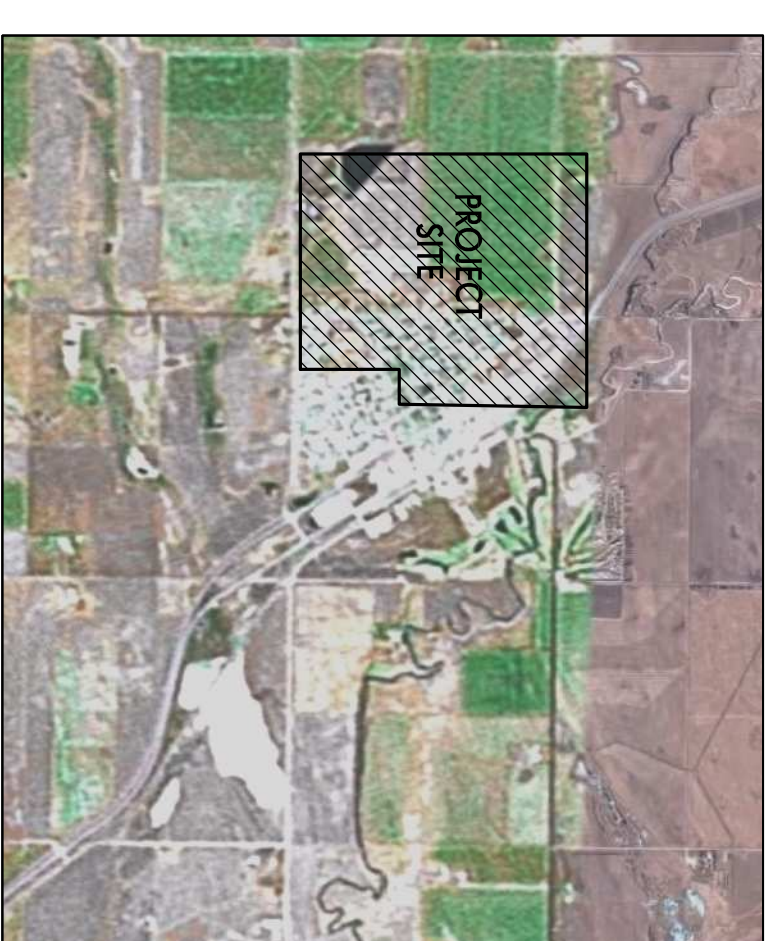


OVERALL PROPOSED CONCEPT SUBDIVISION PLAN

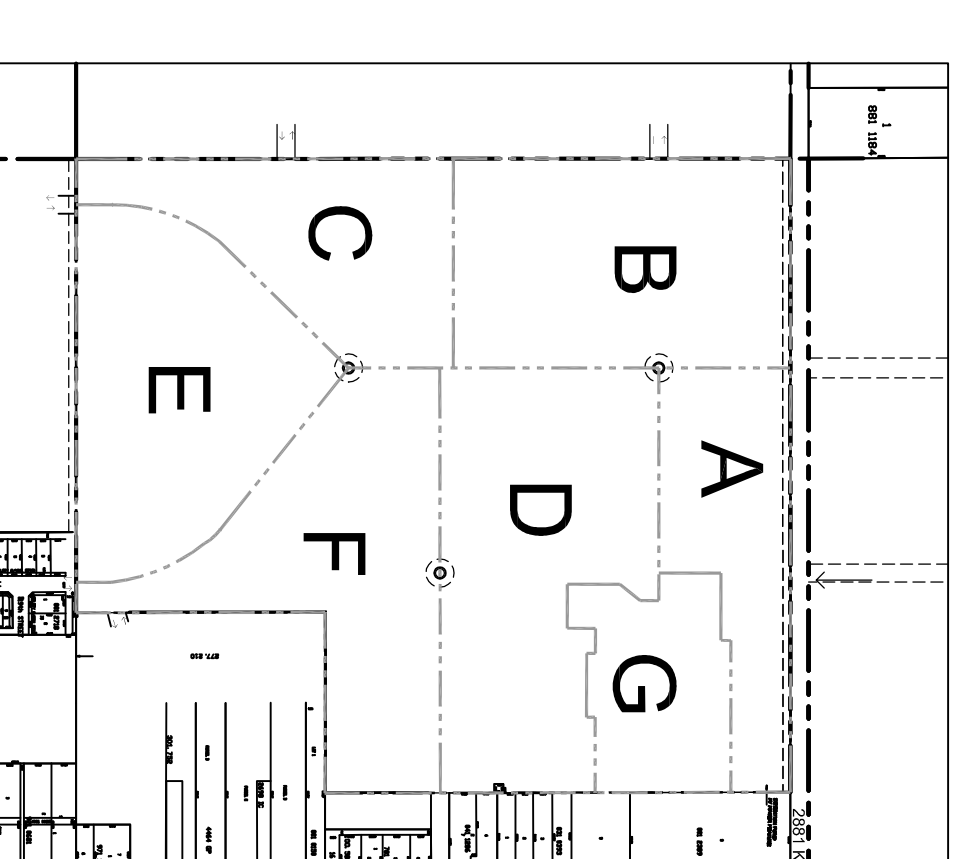
Nanton Mixed Use Development NANTON, ALBERTA

D2S FARMS Ltd.

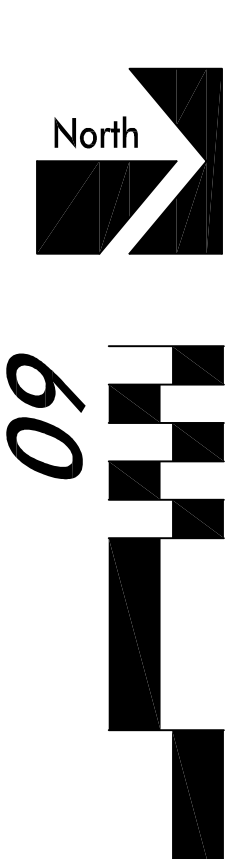
SDA - A :	1 - A : 0.56 HA/ 1.40 AC
	2 - A : 0.82 HA/ 1.96 AC
	3 - A : 0.43 HA/ 1.07 AC
	4 - A : 0.27 HA/ 0.67 AC
	5 - A : 0.32 HA/ 0.78 AC
	6 - A : 0.41 HA/ 1.01 AC
SUB-TOTAL :	2.81 HA/ 6.89 AC
SDA - B :	LOTS 1- 92 : 4.83 HA/ 11.94 AC
SDA - C :	LOTS 1- 60 : 3.28 HA/ 8.11 AC
SDA - D :	1 - D : 0.78 HA/ 1.93 AC
	2 - D : 0.72 HA/ 1.78 AC
	3 - D : 0.65 HA/ 1.61 AC
	4 - D : 0.49 HA/ 1.21 AC
	5 - D : 0.16 HA/ 0.40 AC
	6 - D : 0.18 HA/ 0.44 AC
	7 - D : 0.20 HA/ 0.49 AC
	8 - D : 0.16 HA/ 0.40 AC
	9 - D : 0.16 HA/ 0.40 AC
	10 - D : 0.18 HA/ 0.44 AC
	11 - D : 0.10 HA/ 0.25 AC
	12 - D : 0.16 HA/ 0.40 AC
	13 - D : 0.16 HA/ 0.40 AC
	14 - D : 0.13 HA/ 0.32 AC
SUB-TOTAL :	4.23 HA/ 10.47 AC
SDA - E :	1 - E : 1.44 HA/ 3.56 AC
	2 - E : 1.16 HA/ 2.87 AC
	3 - E : 1.50 HA/ 3.71 AC
	LOT 1 - 47 : 2.33 HA/ 5.76 AC
SUB-TOTAL :	6.43 HA/ 15.90 AC
SDA - F :	1 - F : 3.46 HA/ 8.55 AC
	2 - F : 3.38 HA/ 8.35 AC
SUB-TOTAL :	6.84 HA/ 16.90 AC
SDA - G :	1 - G : 0.47 HA/ 1.16 AC
	2 - G : 0.52 HA/ 1.28 AC
	3 - G : 0.38 HA/ 0.94 AC
	4 - G : 0.54 HA/ 1.33 AC
	5 - G : 0.50 HA/ 1.24 AC
	6 - G : 0.33 HA/ 0.82 AC
SUB-TOTAL :	2.74 HA/ 6.77 AC



Vicinity Map
 Not to Scale



Key Map
 Not to Scale



ALL BUILDINGS, IMPROVEMENTS, THEIR OCCUPANTS AND THE USES AS SHOWN ON THIS PLAN ARE PRELIMINARY AND SUBJECT TO MODIFICATION AT THE OWNER'S DISCRETION WITHOUT NOTICE. THIS PRELIMINARY SITE PLAN IS BASED ON INFORMATION FURNISHED TO NARDEL RETAIL ARCHITECTS LLP AND IS SUBJECT TO VERIFICATION BY LEGALS, SURVEYS AND GOVERNING AGENCIES ETC. THIS EXHIBIT IS NOT NECESSARILY A REPRESENTATION AS TO IDENTITY, TYPE, SIZE, LOCATION, TYPING OR OCCUPANCY OF ANY BUILDING WITHIN THIS CENTER.

DATE: August 5, 2008
 MODEL JOB#: NADDEL-004-NANTON-2007
 PROJECT #: AC-D2SL-CDG-0004-NANTON-2007

NARDEL RETAIL ARCHITECTS, LLP
 3080 BRISTOL ST. SUITE 500
 COSTA MESA, CA 92626
 T: 714.540.5000 F: 714.755.3013
 WWW.NARDELARC.COM

